

**? WHO SHOULD ATTEND**

Gastroenterologists | Hepatologists | Pathologists | Radiologists | Oncologists | Research scholars | Doctors and General Physicians | Deans and Professors of Medicine & Hepatology departments | Professors & Students from cancer research centers | Clinical Development Physicians | Researchers & Scientists | Public Health Professional | Medical Equipment Manufacturers | Hospitals and Health Services | Medical & Health care Organizations & Associations | Pancreas and Liver research institutes | Nurse and nursing education institutions | Medical Colleges | Business Professionals | Distributors/Sales Representatives | Pharmaceutical Companies

# EURO CONGRESS ON PANCREAS

OCT 26-27, 2020 | PARIS, FRANCE

## *Venue*

Mercure Paris Charles De Gaulle  
Airport & Convention

BP 20248 -Roissypôle Ouest -Route  
de la commune -95713  
Roissy CDG Cedex

**2**

DAYS WITH MORE  
THAN 45 SESSIONS,  
KEYNOTES & TALKS

**12+**

INNOVATIVE  
FEATURED  
SPEAKERS

**20+**

HOURS OF  
NETWORKING  
EVENTS

**60+**

INTERNATIONAL  
SPEAKERS

**125+**

EDUCATIONAL  
SESSIONS

## Welcome Message

Dear Friends and Colleagues,

Welcome to the Euro Pancreas 2020 conference in Paris. I have often attended and enjoyed cancer conferences in locations distant from where I work and live. There is much to learn from the experience of clinicians and researchers in other areas. In fact, some of my most interesting research projects can trace their origin to ordinary discussions with persons from such places. I recently submitted a major paper that discusses a possible solution to an unmet need for cancer therapy in sub-Saharan Africa. This resulted from a chance meeting at a conference. If this works out as well as I think it will, there will be important results that can change therapy in US and Europe. Take advantage of these conferences. Make an extra effort to meet and speak with people who come from other places. My experience has often been very favorable scientifically and socially.

Sincerely yours,

**Michael Retsky, PhD**

*Harvard TH Chan School of Public Health  
USA*



# PRESENTATION FORUM

## KEYNOTE FORUM / MINI-PLenary SESSIONS

Presentations under Keynote Forum or Mini-Plenary Sessions includes abstracts with remarkable research value selected by the program committee. These significant speeches are delivered by globally recognized honorable speakers and it is open to all registrants.

## DISTINGUISHED SPEAKERS FORUM (ORAL ABSTRACT SESSIONS)

In this forum, speakers and experts of the research field gets an opportunity to showcase their noble research work that involves comprehensive research findings. These formal oral presentations include a wide range of talks covering basic research to advanced research findings in accordance to the theme and scientific sessions of the conference.

## STUDENT FORUM

### POSTER SESSION

This session is particularly introduced to encourage more number of student participation at international conferences, however it is not restricted only to students since it is also available for the participants with language barrier. There are specific guidelines to be followed to prepare the poster. Poster topic should be selected only from relevant scientific sessions with in-depth technical details.

### YOUNG INVESTIGATORS FORUM

An exclusive opportunity for students and young investigators to present their research work through a formal oral presentation. Young Investigators Forum provides a global platform for young researchers and scholars to showcase their valuable contribution to the scientific world and to get acknowledged by the global scientific community of experts. It is an excellent opportunity to recognize young scientific assets with promising research ideas. These oral presentations are of shorter time duration with 10-15 minutes of informative and precise presentations in relevant scientific sessions.

**NO SECRET IS SAFE SHARE YOUR RESEARCH**

<https://pancreas.peersalleyconferences.com/>

TIME TO  
**CONNECT**  
WITH YOUR  
**PEERS**



**PANCREAS**

**2020**

TYPES OF  
ACADEMIC  
REGISTRATIONS

**SPEAKER  
REGISTRATION**

**COMBO A**  
(Registration + 2 night's accommodation)

**COMBO B**  
(Registration + 3 night's accommodation)

**DELEGATE REGISTRATION**



## EDUCATIONAL WORKSHOPS/ RESEARCH WORKSHOPS/CORPORATE WORKSHOPS/MINI- SYMPOSIA

With an aim of transferring knowledge among the participants, workshops are introduced as a part of international conferences. These interactive and occasionally practical sessions gives an opportunity for participants to engage in detail discussion. Workshops are mostly scheduled for 60 to 90-minutes. It may range from learning about a specific topic relevant to international education, products and research which sometimes involves practical demonstration. It helps in enhancing skills, knowledge and understanding of the research field in depth through interactive discussions.

## HIGHLIGHTS OF THE DAY SESSIONS

“Highlights of the Day Sessions” is introduced to discuss and focus a ray upon previous day ORAL ABSTRACT presentations by experts to summarise the key findings. It helps in getting better insights into the various dimensions of the topic.

## EDUCATIONAL SESSIONS/ TRAINING PROGRAMS

Educational Sessions or training programs are specifically designed for a better understanding of the latest findings and technologies. These are generally 45-minute sessions that gives an exposure to the multidisciplinary field, that provides in-depth learning experiences and address educational needs.

## MEET THE PROFESSOR @ NETWORKING SESSIONS

This session involves open discussion between the experts and session attendees, it gives enough time for getting answers to specific questions and doubts. It is an opportunity for attendees to increase their professional networking, sometimes also leads to an excellent collaboration opportunity.

## SCIENTIFIC TRACKS/ SESSIONS

Pancreas/Pancreatology | Pancreatic Diseases and Disorders | Liver Diseases | Diagnosis of Liver Diseases | Pancreatitis | Pancreatic Necrosis | Pancreatic Cancer | Types of Pancreatic Cancer | Symptoms, Causes & Risk Factors of Pancreatic Cancer | Pancreatic Cancer Diagnosis | Pancreatic Cancer Stages | Pancreatic Cancer Treatment | Advanced Pancreatitis Treatment | Pancreatic Surgery and Transplantation | Medical Liver Transplantation | Endocrinology | Gastroenterology | Artificial Pancreas | Hepatology | Genetics and Epigenetics of Liver Cancer

**NO SECRET IS SAFE SHARE YOUR RESEARCH**

<https://pancreas.peersalleyconferences.com/>

## TYPES OF BUSINESS REGISTRATIONS

### SPEAKER REGISTRATION

#### COMBO A

(Registration + 2 night's accommodation)

#### COMBO B

(Registration + 3 night's accommodation)

#### DELEGATE REGISTRATION

## TYPES OF STUDENT REGISTRATIONS

### REGISTRATION

#### YIF

#### COMBO A

(Registration + 2 night's accommodation)

#### COMBO B

(Registration + 3 night's accommodation)

#### POSTERS

## TYPES OF ADDITIONAL REGISTRATIONS

#### Accompanying Person

#### E-Poster

#### Virtual Presentation

#### Workshops

#### Start-Ups



# Concurrent Educational Sessions

## MONDAY, OCTOBER 26, 2020

### PANCREAS/PANCREATOLOGY

- Exocrine pancreas
- Endocrine pancreas
- Pancreas Function
- Pancreas Anatomy
- Pancreas Gland
- Pancreas Hormones
- Pancreas atrophy
- Pancreas histology
- Adenocarcinoma of pancreas
- Pancreatic and periampullary carcinoma
- Pancreatic Cancer

### PANCREATIC DISEASES AND DISORDERS

- Acute Pancreatitis
- Chronic Pancreatitis
- Hereditary Pancreatitis
- Pancreatic Cancer

### LIVER DISEASES

- Hepatitis
- Fatty liver disease
- Autoimmune conditions
- Genetic conditions
- Cancer
- Cirrhosis
- Liver failure

### DIAGNOSIS OF LIVER DISEASES

- Liver Function Tests
- Blood Count Test
- CT scans, MRIs, or ultrasounds
- Liver Biopsy

## GROUP PHOTO

## COFFEE BREAK

### PANCREATITIS

- Acute pancreatitis
- Chronic pancreatitis
- Pancreatitis Causes
- Pancreatitis Diagnosis
- Acute pancreatitis Treatment
- Alcoholic Pancreatitis
- Chronic Pancreatitis Symptoms

### PANCREATIC NECROSIS

- Pathophysiology
- Etiology
- Epidemiology
- Prognosis

### PANCREATIC CANCER

- Pancreatic Cancer Symptoms
- Pancreatic Cancer Risk Factors
- Diagnosis of Pancreatic Cancer
- Pancreatic Cancer treatment

### TYPES OF PANCREATIC CANCER

- Pancreatic Exocrine Tumors
- Adenocarcinoma
- Pancreatic Neuroendocrine Tumors (PNETs)
- Gastrinoma
- Glucagonoma
- Insulinoma
- Somatostatinoma
- VIPoma

## LUNCH BREAK

### SYMPTOMS, CAUSES & RISK FACTORS OF PANCREATIC CANCER

- Pain in the upper abdomen
- Loss of appetite, depression, New-onset diabetes
- Chronic inflammation of the pancreas
- Diabetes, Smoking, Obesity
- Weight loss, Jaundice, Pain, Bowel obstruction

### PANCREATIC CANCER DIAGNOSIS

- Medical history and physical exam
- Imaging tests
- Computed tomography (CT) scan
- Magnetic resonance imaging (MRI)
- Ultrasound
- Cholangiopancreatography
- Positron emission tomography (PET) scan
- Angiography
- Blood tests
- Biopsy

### PANCREATIC CANCER STAGES

- Resectable
- Borderline resectable
- Locally advanced
- Metastatic
- TNM Staging System
- Tumor
- Node
- Metastasis
- Cancer stage grouping

### PANCREATIC CANCER TREATMENT

- Surgery
- Radiation therapy
- Therapies using medication
- Chemotherapy
- Side effects of chemotherapy
- Targeted therapy
- Immunotherapy

## COFFEE BREAK

### ADVANCED PANCREATITIS TREATMENT

- Acute pancreatitis treatment
- Chronic pancreatitis treatment
- Natural treatment for pancreatitis
- Pancreaticobiliary Endoscopy
- Early Detection of Sporadic Pancreatic Cancer
- Medical breakthroughs in prevention, diagnosis and treatment
- Pancreatic pseudocyst treatment
- Feline pancreatitis treatment

### PANCREATIC SURGERY AND TRANSPLANTATION

- Pancreas Transplant
- Simultaneous pancreas-kidney transplant (SPK)
- Pancreas-after-kidney transplant (PAK)

### MEDICAL LIVER TRANSPLANTATION

- Liver Biopsy
- Bariatric surgery
- Living donor transplantation
- Graft rejection
- Immunosuppressive management

### ENDOCRINOLOGY

- Diabetes Mellitus and Autoimmune Disease
- Autoimmune Disease
- Chronic Kidney Disease
- Endocrine Disrupting Chemicals
- Diabetic Nephropathy



# Concurrent Educational Sessions

TUESDAY, OCTOBER 27, 2020

## GASTROENTEROLOGY

- Gastritis
- Gastroenteritis
- Gastric Ulcers
- Gastroschisis
- Implantable Gastric Stimulation
- Imaging and Scanning

## ARTIFICIAL PANCREAS

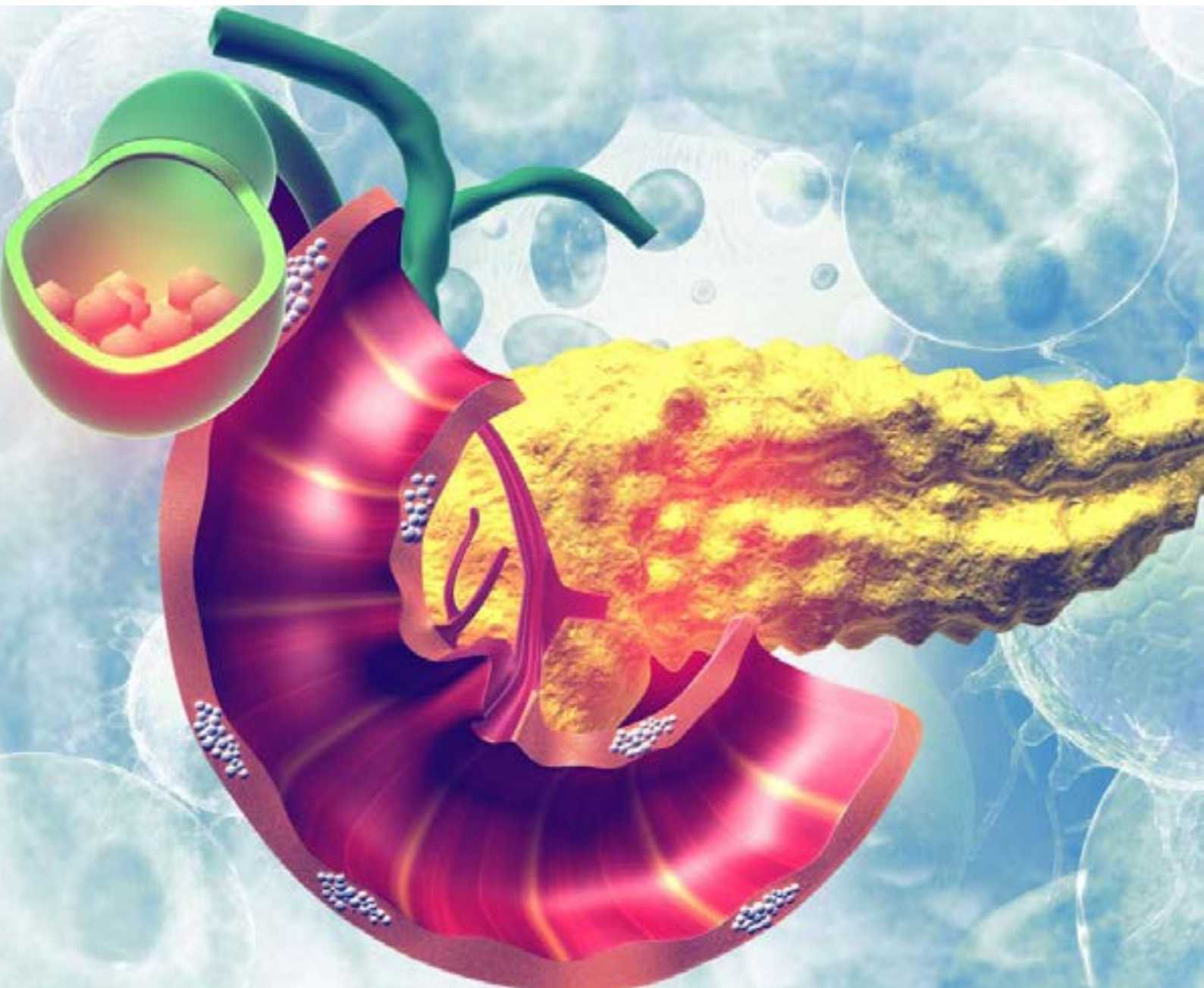
- Closed-loop artificial pancreas
- Bionic pancreas
- Implanted artificial pancreas

## HEPATOLOGY

- Hepatic Disorders
- Gallbladder and Biliary Disease
- Gastrointestinal Pathology
- Gastrointestinal Disorders
- Gastrointestinal Bleeding

## GENETICS AND EPIGENETICS OF LIVER CANCER

- Whole Genome Analysis
- Epigenetics of liver diseases
- DNA Hypomethylation
- Epigenomics of Diabetes and Other Metabolic Diseases



# Sponsors | Media Partners



NO SECRET IS SAFE SHARE YOUR RESEARCH



<https://pancreas.peersalleyconferences.com/>



# NETWORKING...CONFERENCING...FOSTERING

ATTENDING A CONFERENCE ISN'T ALL ABOUT LEARNING AND NETWORKING

## DISCOVERING

A NEW PLACE , PEOPLE AND CULTURE

A right choice of conference destination is an important aspect of any international conference and keeping that in consideration, Pancreas 2020 is scheduled in the Beautiful city "Paris".



Avenue des Champs Élysées



Bustling Boulevards and  
Legendary Cafés



Cathédrale Notre Dame de



Arc de Triomphe



Eiffel Tower



Luxembourg Gardens



Musical Concerts at  
Sainte Chapelle



Musée d'Orsay



Musée du Louvre



Palais Garnier, Opéra  
National de Paris



Place de la Concorde



Seine River Cruises



*Connect with us*



*Venue*

**Mercure Paris Charles De Gaulle  
Airport & Convention**

BP 20248 -Roissypôle Ouest -Route de la  
commune -95713 Roissy CDG Cedex

<https://pancreas.peersalleyconferences.com/>

*Contact Us*

Julia Smith

Program Director | Pancreas 2020

**Peers Alley Media**

1126 59 Ave East, V5X 1Y9

Vancouver BC, Canada

Contact us: [pancreas@meetingsengage.com](mailto:pancreas@meetingsengage.com)

Ph : +1-778-766-2134