

Theme

“Enlightening the
Advancements in treatment
of Liver, Pancreas, and Biliary
Diseases”

**? WHO
SHOULD
ATTEND**

Directors, CEO's | Association president's | Vice
Presidents and professionals | Renowned speakers
| Scientists | World-class Professors | Researchers &
Academics | Educationalists | Cardiologists
| Cardiac Surgeons | Non-Invasive Cardiologist | Non-
Interventional Cardiologist | Interventional
Cardiologist | Electrophysiologists (EP) | Healthcare
Professionals | Cardiothoracic Surgeons |
Cardiology Physicians | Nurse Practitioners |
Cardiovascular Researchers | Cardiovascular Doctors
| Cardiovascular Scientists | Electrophysiologists |
Cardiac Sonographers | Cardiac Perfusionists |
Medical Students | Ph.D. Fellows

Global Summit on Liver, Pancreas and Biliary Diseases: Research and The Latest Advancements in Treatment

October 11-12, 2021

Paris, France

GLOBAL LPBD 2021

2

DAYS WITH MORE
THAN 45 SESSIONS,
KEYNOTES & TALKS

12+

INNOVATIVE
FEATURED
SPEAKERS

20+

HOURS OF
NETWORKING
EVENTS

60+

INTERNATIONAL
SPEAKERS

125+

EDUCATIONAL
SESSIONS

Welcome Message

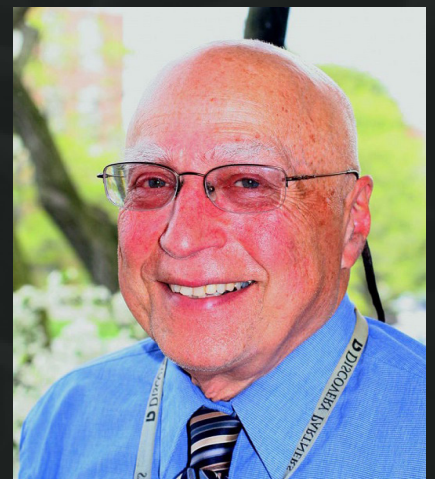
Dear Friends and Colleagues,

Welcome to the GLOBAL LPBD 2021 conference in Paris. I have often attended and enjoyed cancer conferences in locations distant from where I work and live. There is much to learn from the experience of clinicians and researchers in other areas. In fact, some of my most interesting research projects can trace their origin to ordinary discussions with persons from such places. I recently submitted a major paper that discusses a possible solution to an unmet need for cancer therapy in sub-Saharan Africa. This resulted from a chance meeting at a conference. If this works out as well as I think it will, there will be important results that can change therapy in US and Europe. Take advantage of these conferences. Make an extra effort to meet and speak with people who come from other places. My experience has often been very favorable scientifically and socially.

Sincerely yours,

Michael Retsky, PhD

*Harvard TH Chan School of Public Health
USA*



PRESENTATION FORUM

KEYNOTE FORUM / MINI-PLenary SESSIONS

Presentations under Keynote Forum or Mini-Plenary Sessions includes abstracts with remarkable research value selected by the program committee. These significant speeches are delivered by globally recognized honorable speakers and it is open to all registrants.

DISTINGUISHED SPEAKERS FORUM (ORAL ABSTRACT SESSIONS)

In this forum, speakers and experts of the research field gets an opportunity to showcase their noble research work that involves comprehensive research findings. These formal oral presentations include a wide range of talks covering basic research to advanced research findings in accordance to the theme and scientific sessions of the conference.

STUDENT FORUM

POSTER SESSION

This session is particularly introduced to encourage more number of student participation at international conferences, however it is not restricted only to students since it is also available for the participants with language barrier. There are specific guidelines to be followed to prepare the poster. Poster topic should be selected only from relevant scientific sessions with in-depth technical details.

YOUNG INVESTIGATORS FORUM

An exclusive opportunity for students and young investigators to present their research work through a formal oral presentation. Young Investigators Forum provides a global platform for young researchers and scholars to showcase their valuable contribution to the scientific world and to get acknowledged by the global scientific community of experts. It is an excellent opportunity to recognize young scientific assets with promising research ideas. These oral presentations are of shorter time duration with 10-15 minutes of informative and precise presentations in relevant scientific sessions.

TIME TO
CONNECT
WITH YOUR
PEERS



Register & Participate

v

GLOBAL LPBD
2021

TYPES OF ACADEMIC REGISTRATIONS

SPEAKER REGISTRATION

COMBO A

(Registration + 2 night's accommodation)

COMBO B

(Registration + 3 night's accommodation)

DELEGATE REGISTRATION



NO SECRET IS SAFE SHARE YOUR RESEARCH

<https://pancreas.peersalleyconferences.com/>

EDUCATIONAL WORKSHOPS/ RESEARCH WORKSHOPS/CORPORATE WORKSHOPS/MINI- SYMPOSIA

With an aim of transferring knowledge among the participants, workshops are introduced as a part of international conferences. These interactive and occasionally practical sessions gives an opportunity for participants to engage in detail discussion. Workshops are mostly scheduled for 60 to 90-minutes. It may range from learning about a specific topic relevant to international education, products and research which sometimes involves practical demonstration. It helps in enhancing skills, knowledge and understanding of the research field in depth through interactive discussions.

HIGHLIGHTS OF THE DAY SESSIONS

"Highlights of the Day Sessions" is introduced to discuss and focus a ray upon previous day ORAL ABSTRACT presentations by experts to summarise the key findings. It helps in getting better insights into the various dimensions of the topic.

EDUCATIONAL SESSIONS/ TRAINING PROGRAMS

Educational Sessions or training programs are specifically designed for a better understanding of the latest findings and technologies. These are generally 45-minute sessions that gives an exposure to the multidisciplinary field, that provides in-depth learning experiences and address educational needs.

MEET THE PROFESSOR @ NETWORKING SESSIONS

This session involves open discussion between the experts and session attendees, it gives enough time for getting answers to specific questions and doubts. It is an opportunity for attendees to increase their professional networking, sometimes also leads to an excellent collaboration opportunity.

SCIENTIFIC TRACKS/ SESSIONS

Pancreas/Pancreatology | Pancreatic Diseases and Disorders | Liver Diseases | Diagnosis of Liver Diseases | Pancreatitis | Pancreatic Necrosis | Pancreatic Cancer | Types of Pancreatic Cancer | Symptoms, Causes & Risk Factors of Pancreatic Cancer | Pancreatic Cancer Diagnosis | Pancreatic Cancer Stages | Pancreatic Cancer Treatment | Advanced Pancreatitis Treatment | Pancreatic Surgery and Transplantation | Medical Liver Transplantation | Endocrinology | Gastroenterology | Artificial Pancreas | Hepatology | Genetics and Epigenetics of Liver Cancer

NO SECRET IS SAFE SHARE YOUR RESEARCH

<https://pancreas.peersalleyconferences.com/>

TYPES OF BUSINESS REGISTRATIONS

SPEAKER REGISTRATION

COMBO A

(Registration + 2 night's accommodation)

COMBO B

(Registration + 3 night's accommodation)

DELEGATE REGISTRATION

TYPES OF STUDENT REGISTRATIONS

REGISTRATION

YIF

COMBO A

(Registration + 2 night's accommodation)

COMBO B

(Registration + 3 night's accommodation)

POSTERS

TYPES OF ADDITIONAL REGISTRATIONS

Accompanying Person

E-Poster

Virtual Presentation

Workshops

Start-Ups



Concurrent Educational Sessions

MONDAY, OCTOBER 11, 2021

PANCREAS/PANCREATOLOGY

- Exocrine pancreas
- Endocrine pancreas
- Pancreas Function
- Pancreas Anatomy
- Pancreas Gland
- Pancreas Hormones
- Pancreas atrophy
- Pancreas histology
- Adenocarcinoma of pancreas
- Pancreatic and periampullary carcinoma
- Pancreatic Cancer

PANCREATIC DISEASES AND DISORDERS

- Acute Pancreatitis
- Chronic Pancreatitis
- Hereditary Pancreatitis
- Pancreatic Cancer

LIVER DISEASES

- Hepatitis
- Fatty liver disease
- Autoimmune conditions
- Genetic conditions
- Cancer
- Cirrhosis
- Liver failure

DIAGNOSIS OF LIVER DISEASES

- Liver Function Tests
- Blood Count Test
- CT scans, MRIs, or ultrasounds
- Liver Biopsy

GROUP PHOTO

COFFEE BREAK

PANCREATITIS

- Acute pancreatitis
- Chronic pancreatitis
- Pancreatitis Causes
- Pancreatitis Diagnosis
- Acute pancreatitis Treatment
- Alcoholic Pancreatitis
- Chronic Pancreatitis Symptoms

PANCREATIC NECROSIS

- Pathophysiology
- Etiology
- Epidemiology
- Prognosis

PANCREATIC CANCER

- Pancreatic Cancer Symptoms
- Pancreatic Cancer Risk Factors
- Diagnosis of Pancreatic Cancer
- Pancreatic Cancer treatment

TYPES OF PANCREATIC CANCER

- Pancreatic Exocrine Tumors
- Adenocarcinoma
- Pancreatic Neuroendocrine Tumors (PNETs)
- Gastrinoma
- Glucagonoma
- Insulinoma
- Somatostatinoma
- VIPoma

LUNCH BREAK

SYMPTOMS, CAUSES & RISK FACTORS OF PANCREATIC CANCER

- Pain in the upper abdomen
- Loss of appetite, depression, New-onset diabetes
- Chronic inflammation of the pancreas
- Diabetes, Smoking, Obesity
- Weight loss, Jaundice, Pain, Bowel obstruction

PANCREATIC CANCER DIAGNOSIS

- Medical history and physical exam
- Imaging tests
- Computed tomography (CT) scan
- Magnetic resonance imaging (MRI)
- Ultrasound
- Cholangiopancreatography
- Positron emission tomography (PET) scan
- Angiography
- Blood tests
- Biopsy

PANCREATIC CANCER STAGES

- Resectable
- Borderline resectable
- Locally advanced
- Metastatic
- TNM Staging System
- Tumor
- Node
- Metastasis
- Cancer stage grouping

PANCREATIC CANCER TREATMENT

- Surgery
- Radiation therapy
- Therapies using medication
- Chemotherapy
- Side effects of chemotherapy
- Targeted therapy
- Immunotherapy

COFFEE BREAK

ADVANCED PANCREATITIS TREATMENT

- Acute pancreatitis treatment
- Chronic pancreatitis treatment
- Natural treatment for pancreatitis
- Pancreaticobiliary Endoscopy
- Early Detection of Sporadic Pancreatic Cancer
- Medical breakthroughs in prevention, diagnosis and treatment
- Pancreatic pseudocyst treatment
- Feline pancreatitis treatment

PANCREATIC SURGERY AND TRANSPLANTATION

- Pancreas Transplant
- Simultaneous pancreas-kidney transplant (SPK)
- Pancreas-after-kidney transplant (PAK)

MEDICAL LIVER TRANSPLANTATION

- Liver Biopsy
- Bariatric surgery
- Living donor transplantation
- Graft rejection
- Immunosuppressive management

ENDOCRINOLOGY

- Diabetes Mellitus and Autoimmune Disease
- Autoimmune Disease
- Chronic Kidney Disease
- Endocrine Disrupting Chemicals
- Diabetic Nephropathy

Concurrent Educational Sessions

TUESDAY, OCTOBER 12, 2021

GASTROENTEROLOGY

- Gastritis
- Gastroenteritis
- Gastric Ulcers
- Gastroschisis
- Implantable Gastric Stimulation
- Imaging and Scanning

ARTIFICIAL PANCREAS

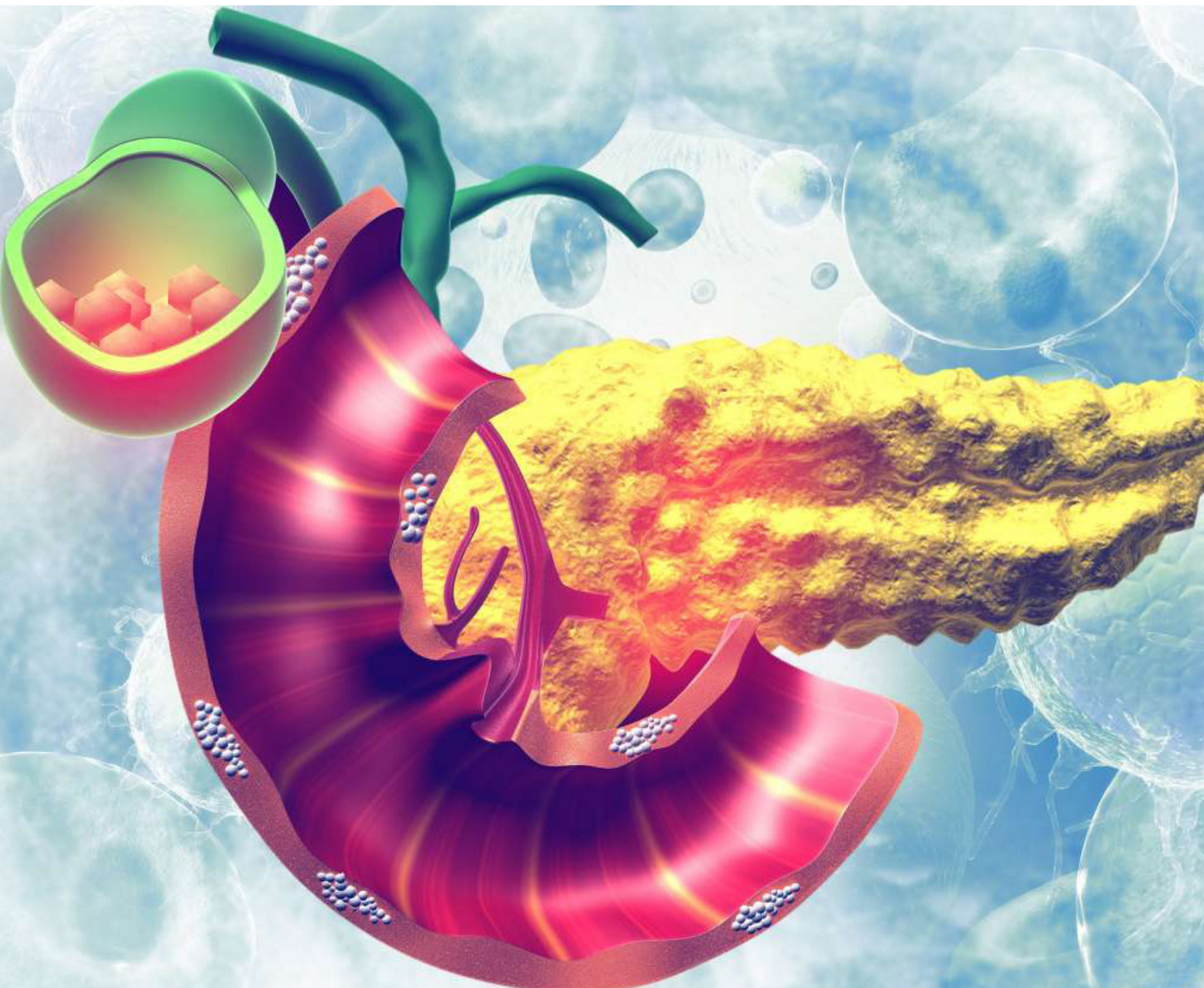
- Closed-loop artificial pancreas
- Bionic pancreas
- Implanted artificial pancreas

HEPATOLOGY

- Hepatic Disorders
- Gallbladder and Biliary Disease
- Gastrointestinal Pathology
- Gastrointestinal Disorders
- Gastrointestinal Bleeding

GENETICS AND EPIGENETICS OF LIVER CANCER

- Whole Genome Analysis
- Epigenetics of liver diseases
- DNA Hypomethylation
- Epigenomics of Diabetes and Other Metabolic Diseases



Sponsors | Media Partners



NO SECRET IS SAFE SHARE YOUR RESEARCH

<https://pancreas.peersalleyconferences.com/>



NETWORKING...CONFERENCING...FOSTERING

ATTENDING A CONFERENCE ISN'T ALL
ABOUT LEARNING AND NETWORKING

DISCOVERING

A NEW PLACE , PEOPLE AND CULTURE

A right choice of conference destination is an important aspect of any international conference and keeping that in consideration, GLOBAL LPBD 2021 is scheduled in the Beautiful city "Paris".



Avenue des Champs Élysées



Bustling Boulevards and
Legendary Cafés



Cathédrale Notre Dame de



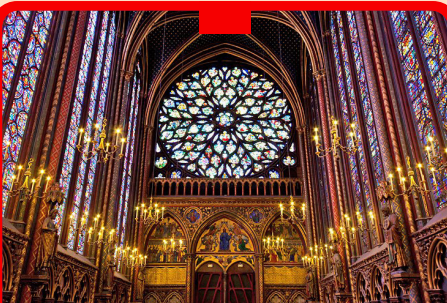
Arc de Triomphe



Eiffel Tower



Luxembourg Gardens



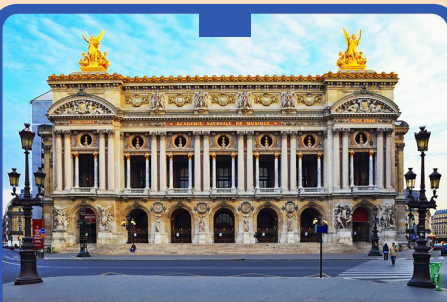
Musical Concerts at
Sainte Chapelle



Musée d'Orsay



Musée du Louvre



Palais Garnier, Opéra
National de Paris



Place de la Concorde



Seine River Cruises

Connect with us



<https://pancreas.peersalleyconferences.com/>

Contact Us

Julia Smith

Program Director | GLOBAL LPBD 2021

Peers Alley Media

1126 59 Ave East, V5X 1Y9

Vancouver BC, Canada

Contact us: pancreas@meetingsengage.com

Ph : +1-778-766-2134